



Houdini:Manage Users Tutorial

The following tutorial details how manage users on your Houdini Master Account.

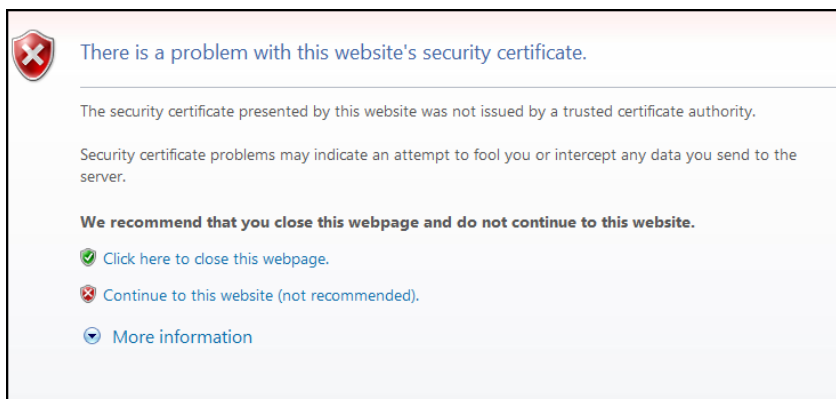
1. Begin by logging in to the Houdini interface with your user name and password.



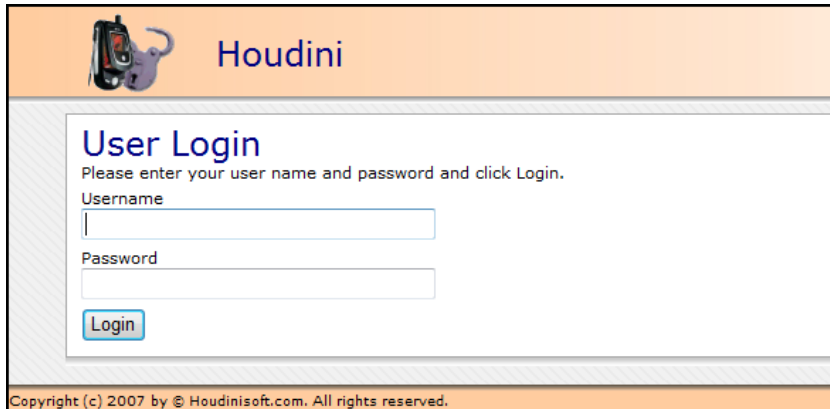
2. Navigate to the main menu. Click on the reports icon.



3. The link will open in your web browser. Click "Continue to this website" to get to the login screen.

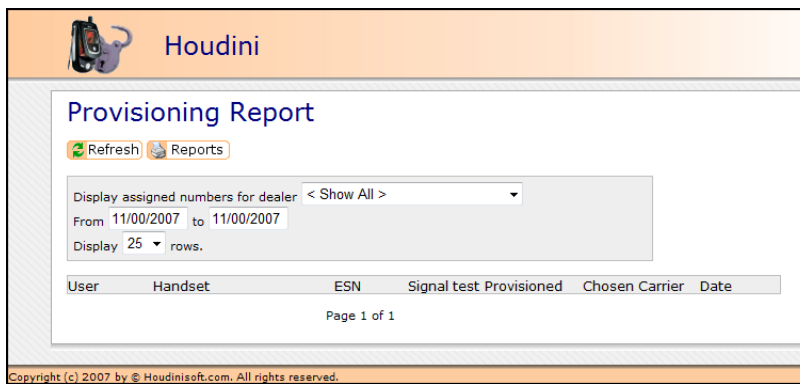


4. Enter your Username and Password to gain access to your flashing reports.



The screenshot shows the Houdini User Login page. At the top left is a logo of a mobile phone with a hand holding it. To the right of the logo is the word "Houdini" in a blue font. Below the logo and name is a white box with a blue border containing the login form. The form has the title "User Login" in blue, followed by the instruction "Please enter your user name and password and click Login." There are two input fields: "Username" and "Password". Below the password field is a blue "Login" button. At the bottom of the page, there is a copyright notice: "Copyright (c) 2007 by © Houdinisoft.com. All rights reserved."

5. At the Provisioning screen click on the Reports link.

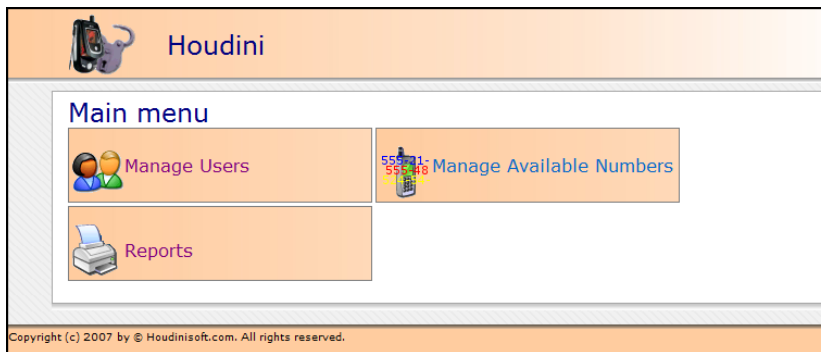


The screenshot shows the Houdini Provisioning Report page. At the top left is the same mobile phone logo as in the previous screenshot. To the right is the word "Houdini" in blue. Below is a white box with a blue border containing the report interface. The title "Provisioning Report" is in blue. There are two buttons: "Refresh" (with a green circular arrow icon) and "Reports" (with a document icon). Below these buttons is a search area with the text "Display assigned numbers for dealer" followed by a dropdown menu showing "< Show All >". Below that is a date range selector: "From 11/00/2007 to 11/00/2007". Below the date range is a row count selector: "Display 25 rows." Below the search area is a table header with the following columns: "User", "Handset", "ESN", "Signal test", "Provisioned", "Chosen Carrier", and "Date". Below the table header is the text "Page 1 of 1". At the bottom of the page, there is a copyright notice: "Copyright (c) 2007 by © Houdinisoft.com. All rights reserved."

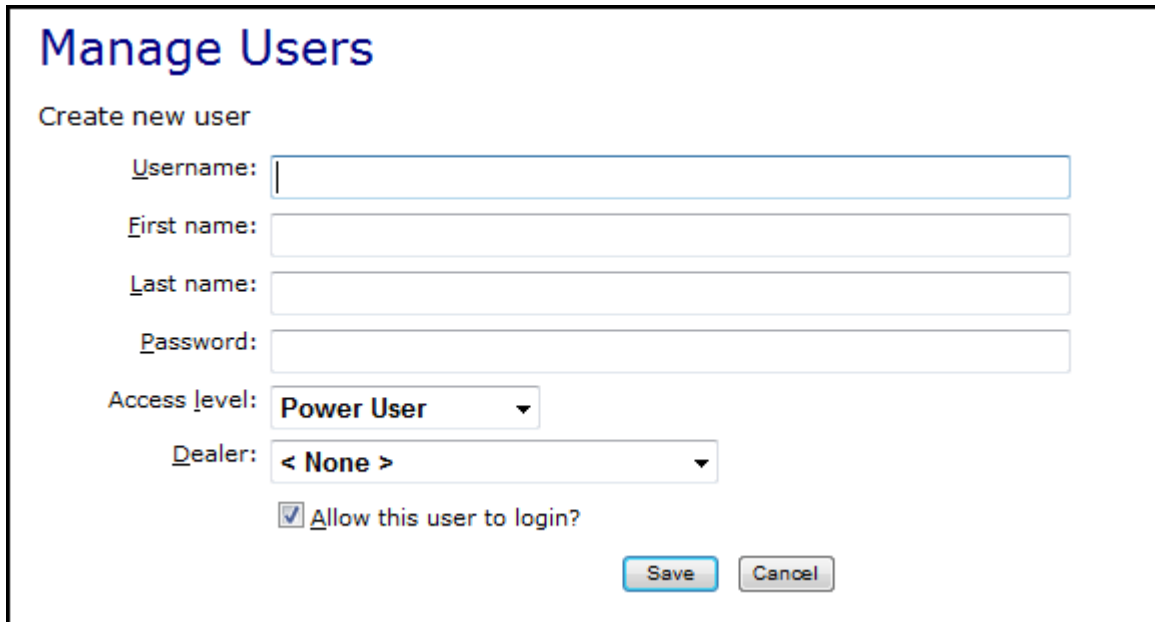
6. Once at the main menu of the reports screen, click again on the main menu icon.



7. At the Main menu screen click on the Manage users icon.



9. At the new user screen enter the information for the new user you want to add. Access level determined the user rights on the report screens.
- Power Users-Have full rights to add/delete users, check all account reports.
 - Manager Users-Have access to check all reports;credits,flashes,provisioning
 - User Stations-This user has right to only view limited reports of handsets flashed. User cannot check credits or alter any account settings. (We recommend User station account settings to retail customer representatives)



Manage Users

Create new user

Username:

First name:

Last name:

Password:

Access level: **Power User** ▼

Dealer: < None > ▼

Allow this user to login?

For questions regarding these instructions, please email support@Houdinisoft.com or call 800.496.0156