



Houdini Initial Setup

IMPORTANT: BEFORE PLUGGING IN A CABLE AND USING HOUDINI, ALWAYS REBOOT AND RESET THE PHONE TO ENSURE A PROPER FLASH.

Step 1. If you haven't already downloaded the necessary files to get started visit our HelpDesk website and click on the [Downloads](#) link in the navigation bar. If you have already downloaded the files skip to step 2.

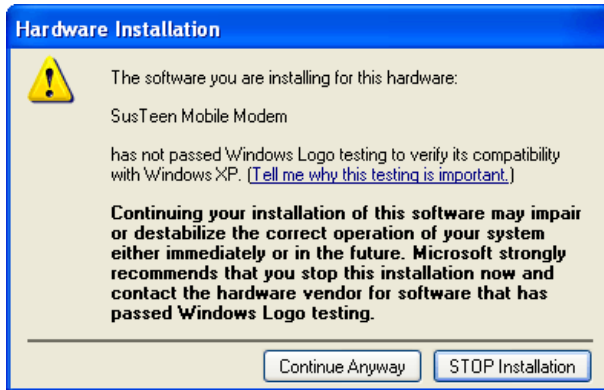
- You will need 3 files.
 - Houdini Setup file
 - Universal Drivers file
 - Motorola drivers file
- To download just click on the file name, a screen will appear asking to save or open the file. Select the save button and the location of where you would like to save the file. If you don't have a location for the file just save it to the Desktop to help you locate the file after the download.

Step 2. Extract the files to your desktop. (*Follow the unzip files on the download section to extract)

Once the files have been downloaded just click on the setup files and follow the setup instructions.

When installing your cable driver Windows may display the 'Digital Signature Not Found' warning, indicating that the drivers being installed does not contain a Microsoft Digital Signature.

You must click on the **[Continue Anyway]** button to continue installing your cable driver, to properly communicate with your mobile phone. **Note:** When installing the software this warning may appear multiple times (Once for every Driver).



Step 3. Once you have completed the installation process your ready to start flashing. Always use the USB extender cable when using the Universal cables.

- Plug in the correct cable to your phone
- Plug in the USB extender cable to your PC
- Connect the male tip to the female extender cable

Step 4. The first time you plug in your phone to your computer it will display the “Found new Hardware wizard”.



- Click on the “No not at this time” button and click Next



- Click on the “Install the software Automatically” button and click next.

The process will repeat up to 4 times. Follow these instructions for each Hardware wizard. This will happen each time a new manufacturer is detected or each time you change your USB port. Always install the driver correctly or you will not install your drivers correctly.

By following these easy steps you can ensure your connecting correctly to your phone. For more information please visit our [HelpDesk](#) .